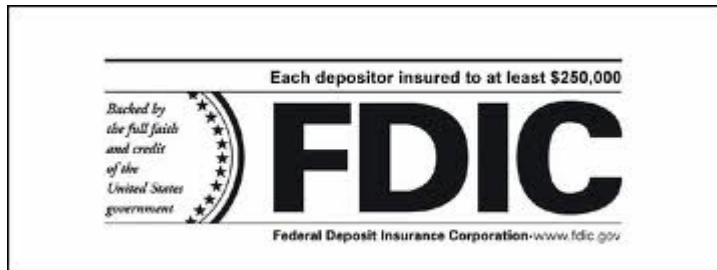


Pike National Bank



Foreclosed Properties Jackson, MS Area

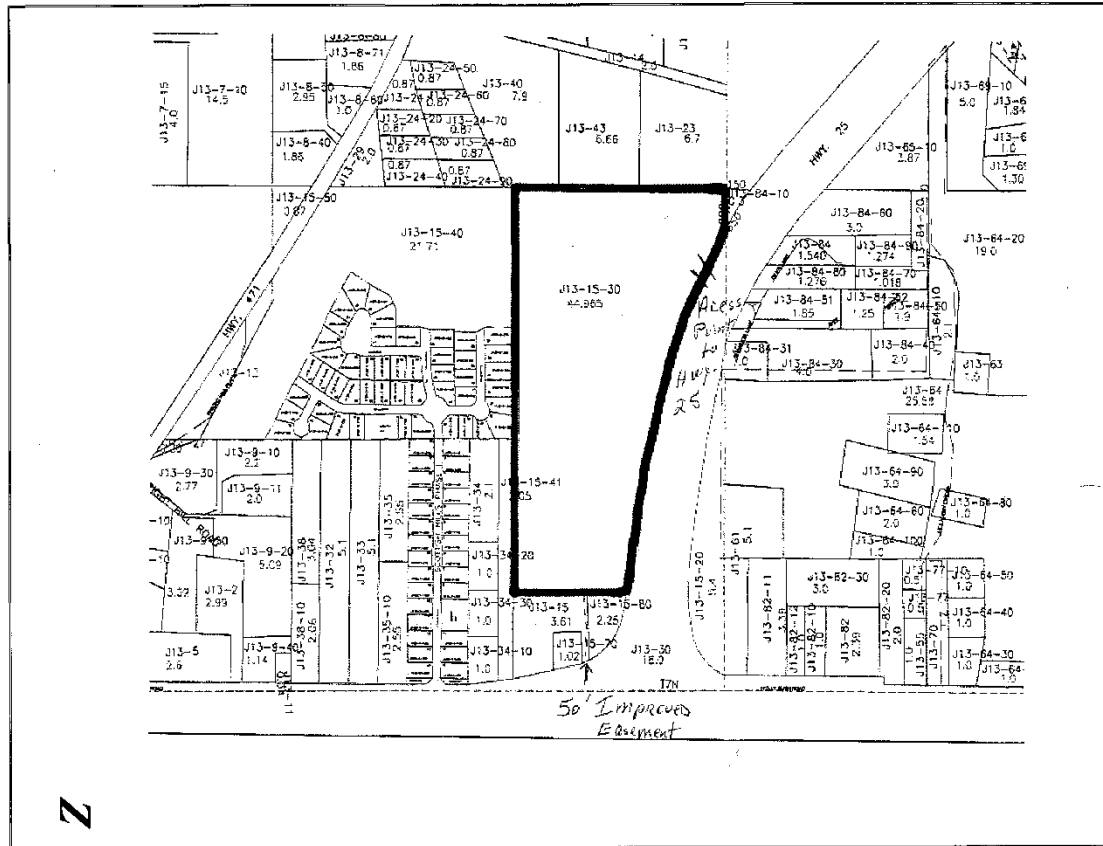
- Contact Roy Loudenslager
at (601) 684-7575, ext. 273
or email: rloudenslager@pnb-ms.net

44.965 Acres Commercial Highway 25, Rankin County

- Zoned C-2 General Commercial
- 1,400 Feet Road Frontage on Highway 25
- Access by easement off Holly Bush Road and Crossover on Highway 25
- Asking Price: \$1,800,000



44.965 Acres Commercial Highway 25, Rankin County



11.22 Acres

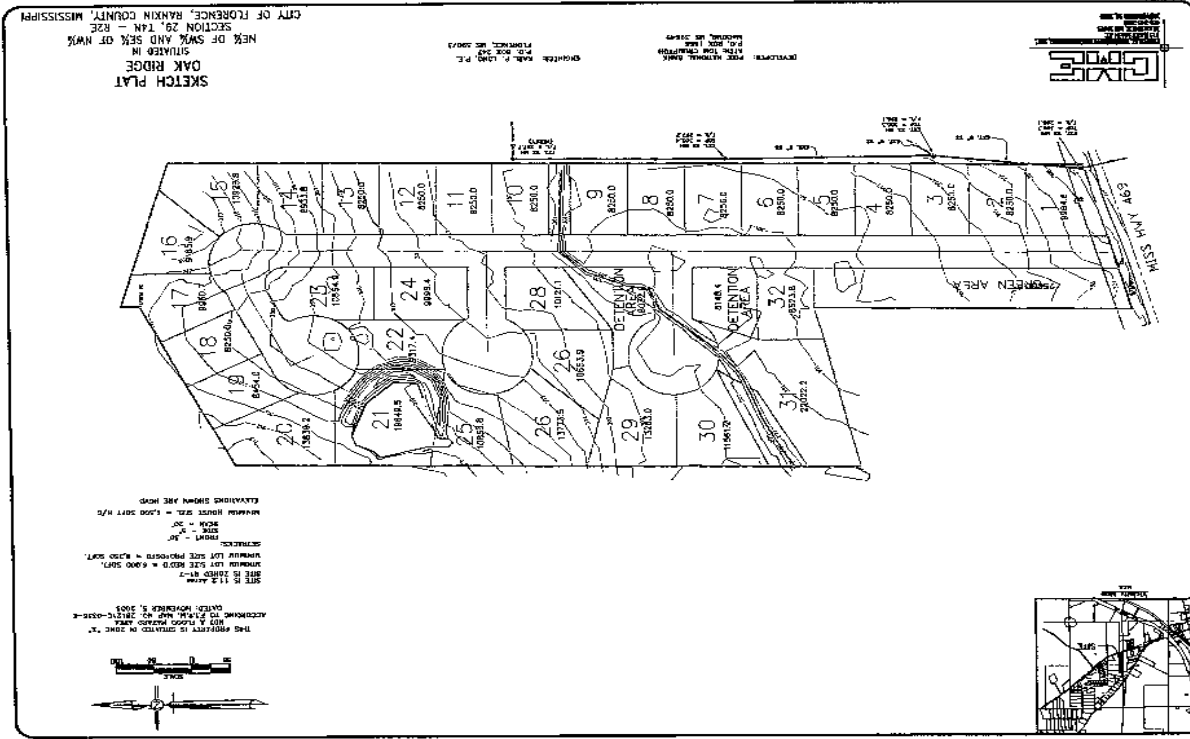
Highway 469, Florence, MS

- Zoned R1-T - Single Family Residential
- Plat for 32 home sites pending approval (shown to right)
- Known as Oak Ridge Subdivision
- Asking Price: \$239,500



11.22 Acres

Highway 469, Florence, MS



10 Acres

7404 Gary Road, Byram, MS

- 10 acres tract
- Current plat is for 34 lots
- Each lot is 10,000 SF+/-
- Zoned R1-C
- All utilities adjoin property
- Asking Price: \$79,500



13 Acre Subdivision Development

Byram, MS

- 13 Acres
- Approved plat 46 lots
- Each lot is 10,000 SF+/-
- Zoned R-2
- Some Utilities in place
- Asking Price: Call for price for single lot or multiple lots for builders



13 Acre Subdivision Development Byram, MS

